

Successful Brownfields Redevelopment Achieving Clarity on Regulatory Requirements, Process and Options

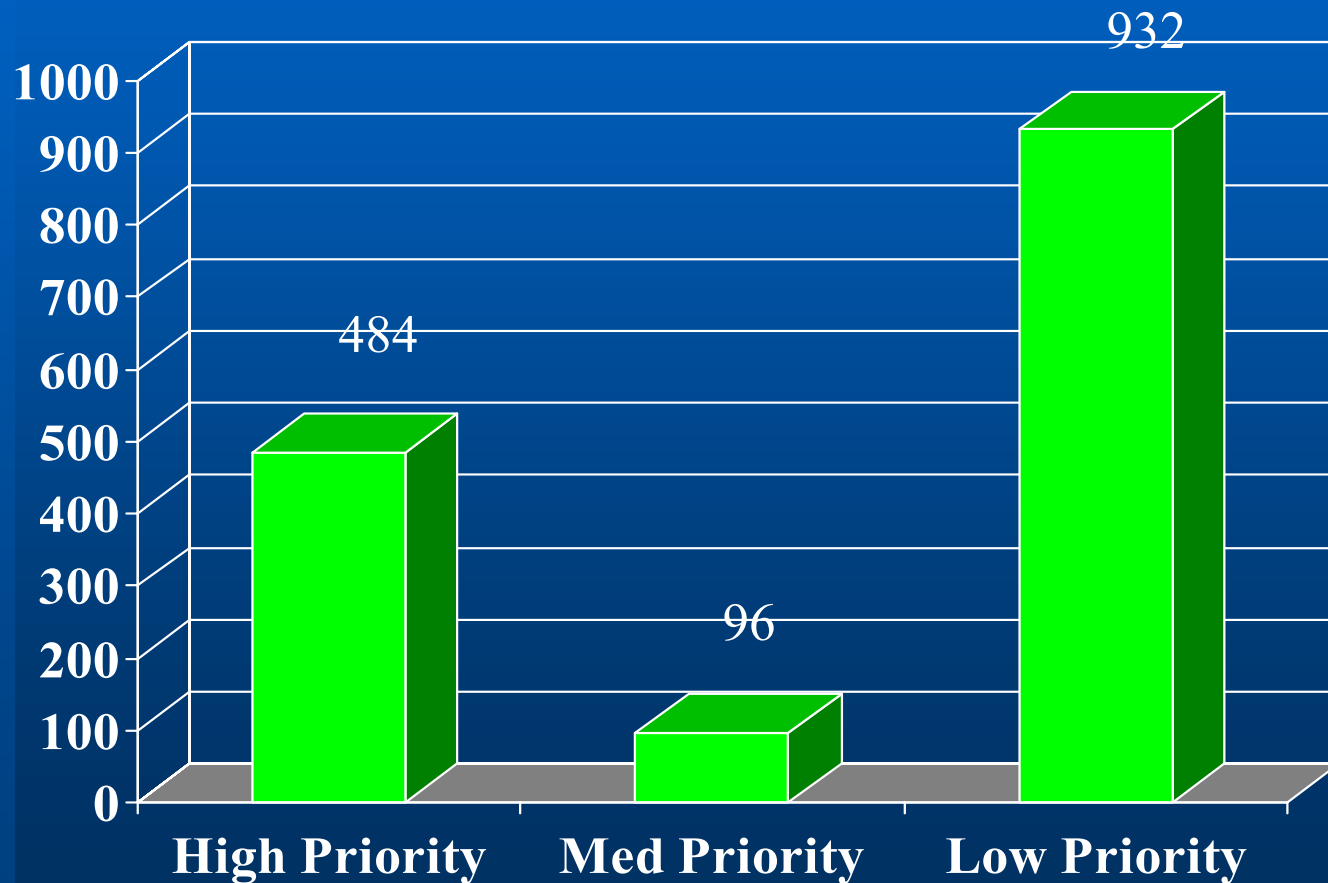
Overview of Regional Board Self-Directed Process

**David Bacharowski
Assistant Executive Officer
California Regional Water Quality Control Board-
Los Angeles Region**

**November 18, 2004
Davidson Conference Center, USC Campus**

LARWQCB Remediation Section - Priority Cases

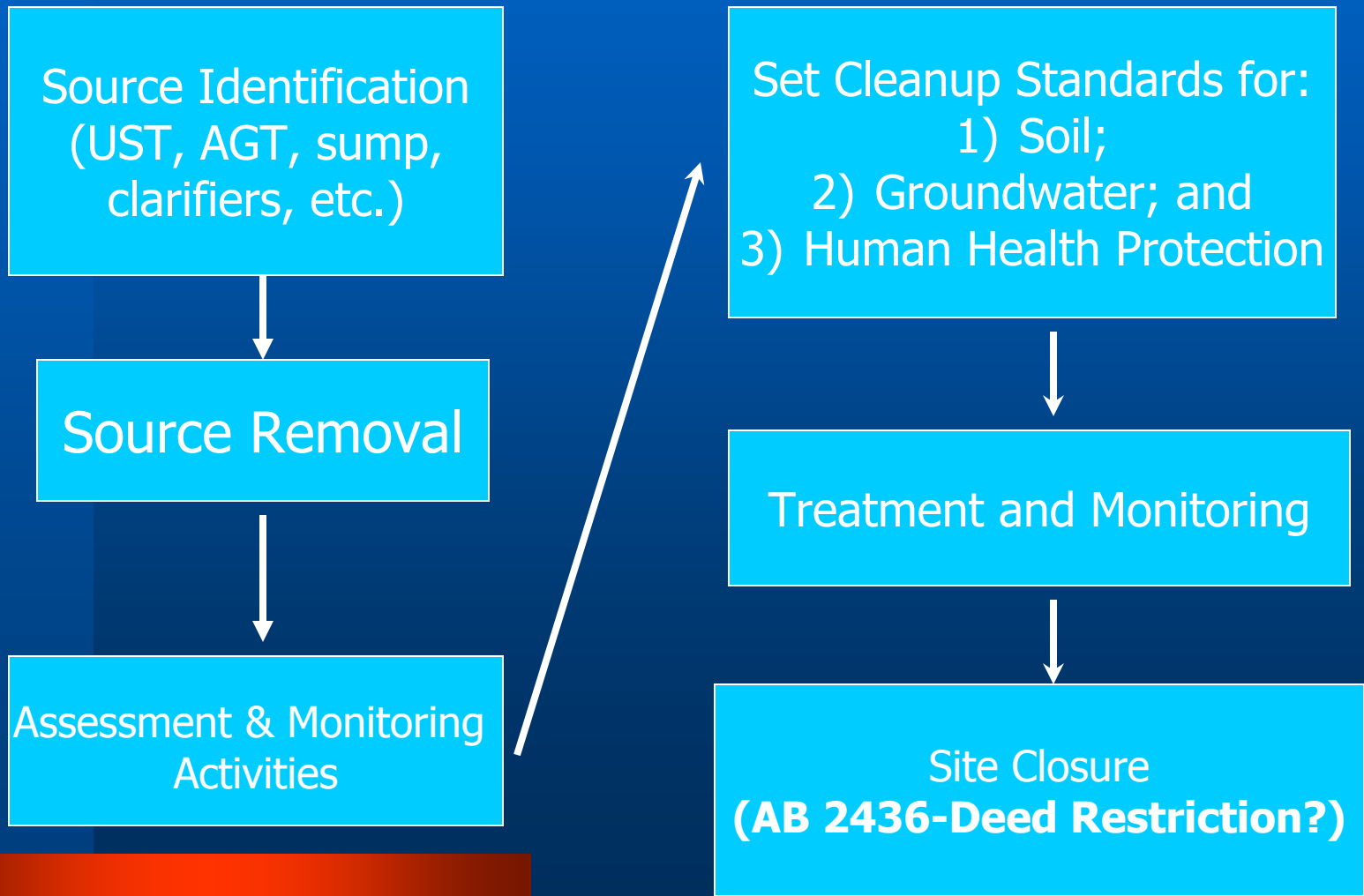
Total
Number
of Cases



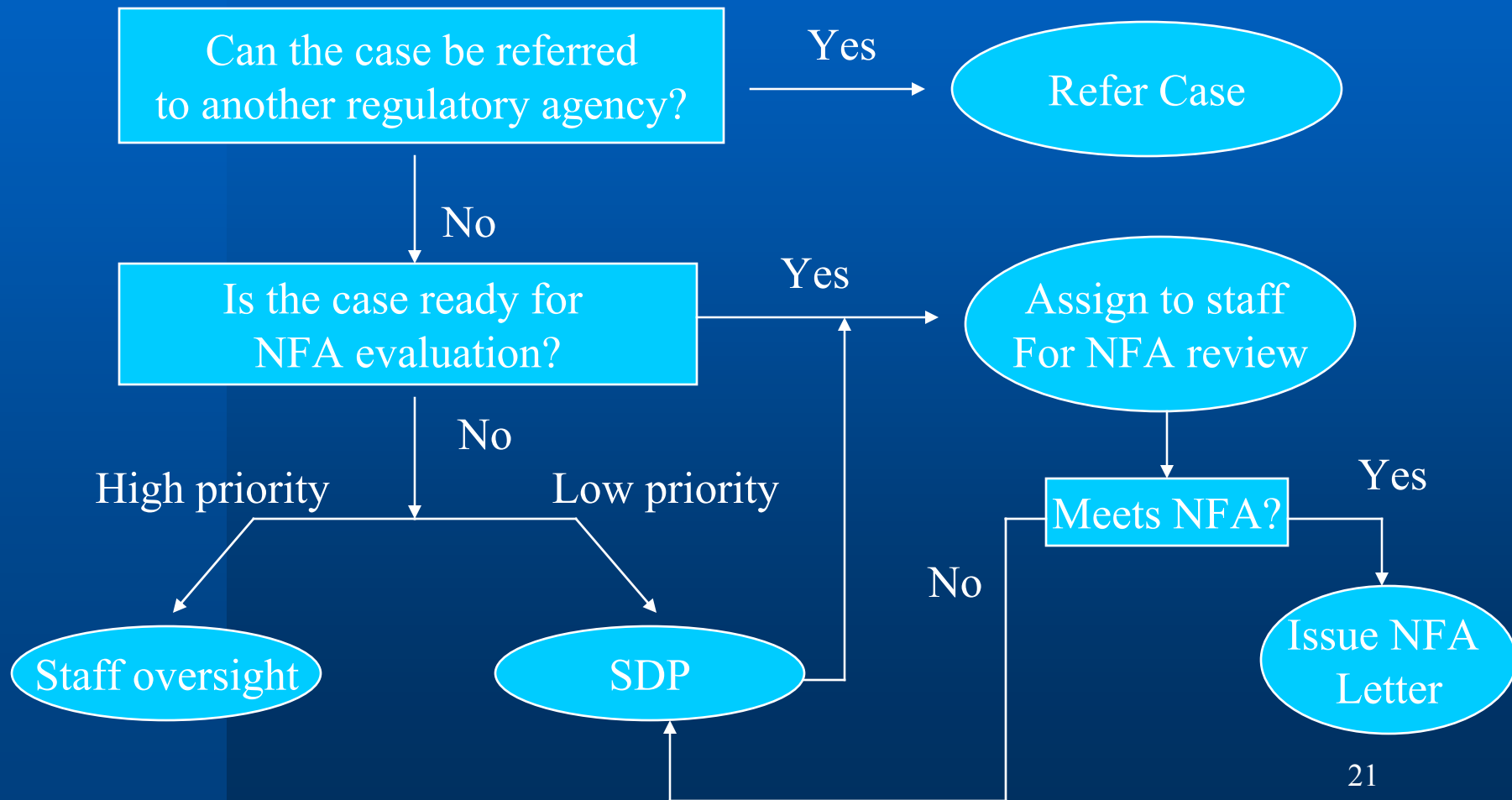
Self-Directed Process--Prioritization Criteria

- Prioritization Criteria
 - 1) Sites that present the greatest threat to water quality
 - 2) Sites within one half mile of domestic supply water production wells
 - 3) Sites with free product
 - 4) Sites that have completed assessment and remediation and may be ready for low risk closure review and evaluation
 - 5) Redevelopment and Brownfield sites
 - 6) Sites with enforcement related activities.

General Cleanup Process



Expedite Case Review



Self-Directed Process

- Concept

- Site prioritized on basis of groundwater protection and threat
- Low and medium priority cases would independently act to remediate site
- Brownfield sites are a high priority (less applicable)

Self-Directed Process (Con't)

- Responsible Party continues with required actions without direct Regional Board oversight
- Responsible Party requests for no further action when assessment, monitoring and cleanup are completed
- Responsible Party assumes substantial risk that process is done properly

Self-Directed Process - Implementation

- Responsible Party requests to enter SDP
- Must have an active cost recovery agreement on file with Regional Board
- Responsible Party reviews SDP Guidance documents and Regional Board requirements
- Responsible Party submits workplan, health & safety plan, etc.
- Are WDRs/NPDES needed?
- Responsible Party initiate phased work, e.g., assessment

Self-Directed Process - Outcome/Site Closure

- When site work is complete, submits final report(s) with closure request (letter), Case Review Form and other final reports Regional Board
- Regional Board staff reviews closure request 60 - 90 days
- If work is complete No Further Action Letter issued
- If work is not complete Regional Board issues directive letter with requirements